

Part 1 of 2:

Before you begin:

Make sure you know what your website login and password are. They may differ from your network login. You request your log/pass info from IS. Submit a ticket to <http://service-center.expression.edu>.

Defining your site in Dreamweaver

Step 2: On your **C drive** create a folder called **“testSite”**

Step 3. Within **“testSite”** Create a folder named **“MySite”**. All files that will go public will be stored in **“MySite”**.

Step 4: In **“C:/testSite”** Create a folder called **“MySiteSource”** for all of the larger original files including .fla, .psd and other source files.

Step 5: Open up Dreamweaver.

- On the menu bar select Site--> New Site (fig. 1)
- **Enter your Local Info:** in the resulting dialogue box fill in the following information: (fig 2)

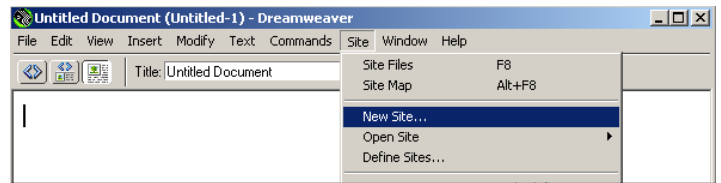
SiteName: MySite

LocalRootFolder: navigate to "MySite" folder

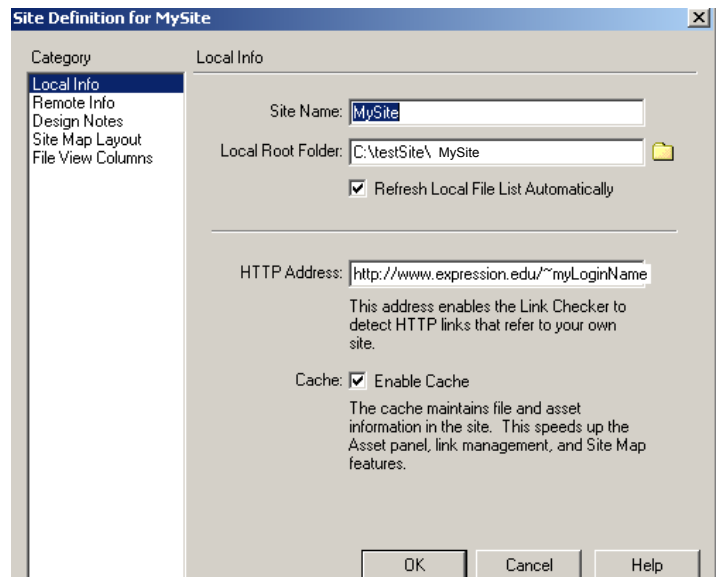
Http Address:

<http://www.expression.edu/~myLoginName>

(you must edit items in italics to reflect your own personal information)

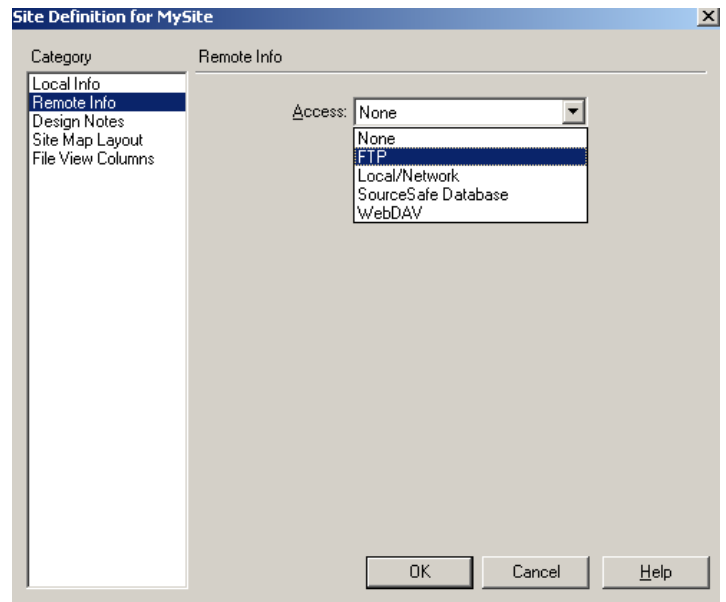


(fig. 1)



(fig. 2)

Step 6: Select **Remote Info** from the “site Definition for MySite” window. (fig 3). Then click where it says “none” and select “FTP” from the drop down menu. (fig 3)



(fig. 3)

Step 7: Enter your FTP info.

Access: FTP

FTP Host*: ftp.expression.edu

Host Directory*: public_html

Login: MyWebLogin (this may be different from your network login)

Password*: **Do Not Enter!!!!!!** If you do other students will be able to access your remote files!

(fields with an “” are specific to Expression students)*

Step 8: Click Ok.

Congratulations! You have just completed the ftp portion of setting up your website. Now lets set up a few pages with links.

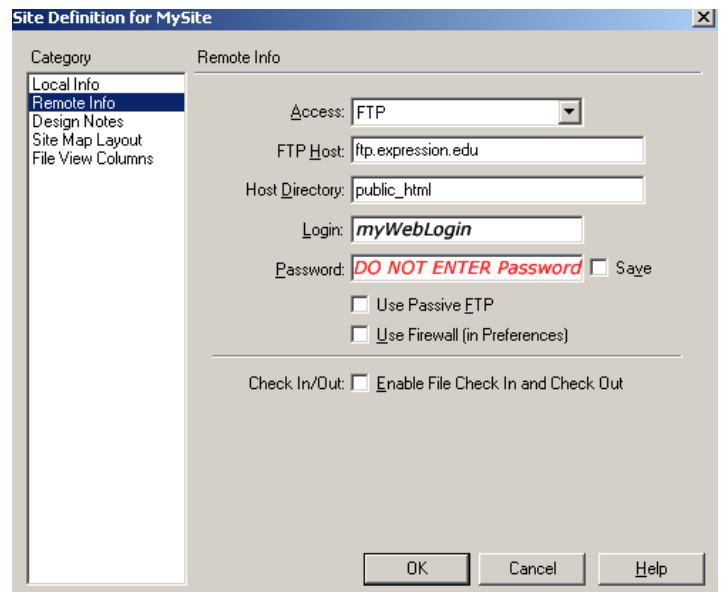


fig. 4

Step 9: Create a new document. Click <CTRL+ N> or go to File>New.

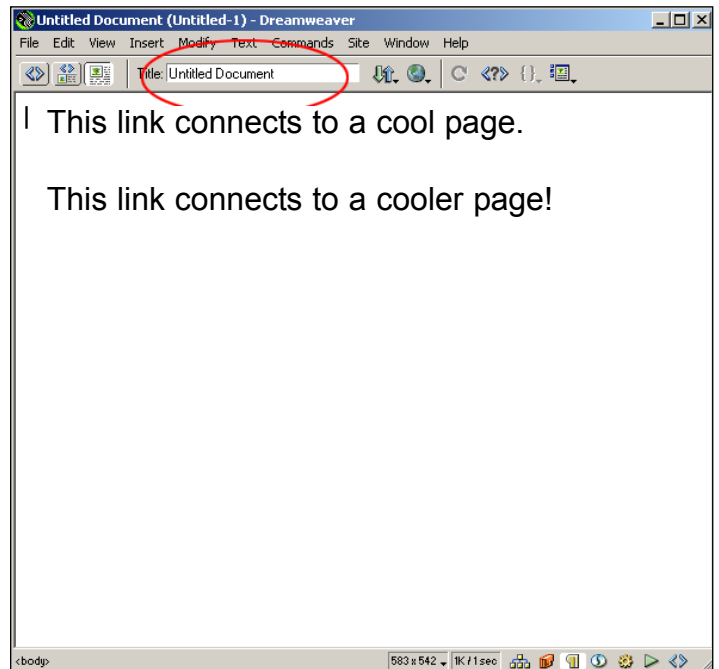
Step 10: Save this document as “**homepage.htm**” into **C:/testSite/MySite**

Step 11: Click within the window area of this document

- type the following: “This link connects to a cool page”.
- Hit return to leave a carriage return and type “ This link connects to a cooler page”.

Step 12: **Give your web page a title.**

- Enter a title in the dialogue box named “title” (fig 5)
This title will display at the top left of a browser’s menu. (fig 6).



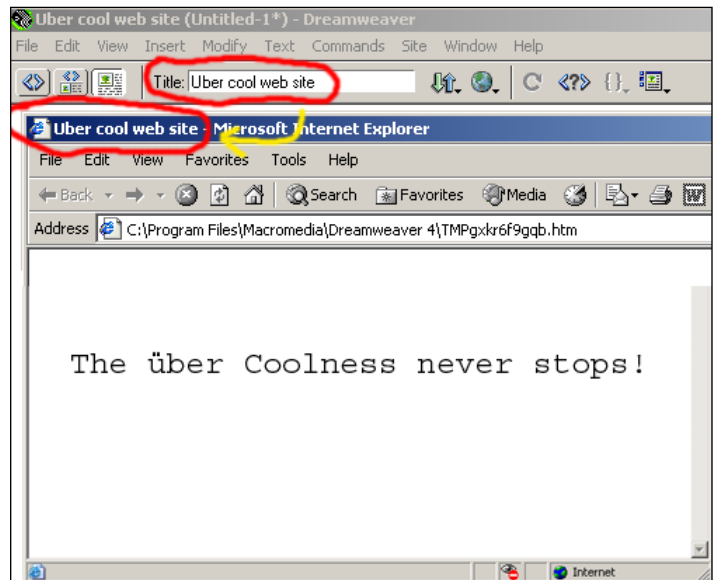
(fig. 5)

Step 13: Create a new document <CTRL + n>.

- Save this document <CTRL + s> as “Page1.htm” in your **C:/testSite/MySite** directory (do not use the .html extension!)
- Give it the **title: Cool Page.**
- Type in some text about how freaking cool this page is.

Step 14: Create a new document <CTRL + n>.

- **Save** this document <CTRL + s> as “Page2.htm” in your **C:/testSite/MySite** directory
- Give it the **title: Cooler Page.**



(fig. 6)

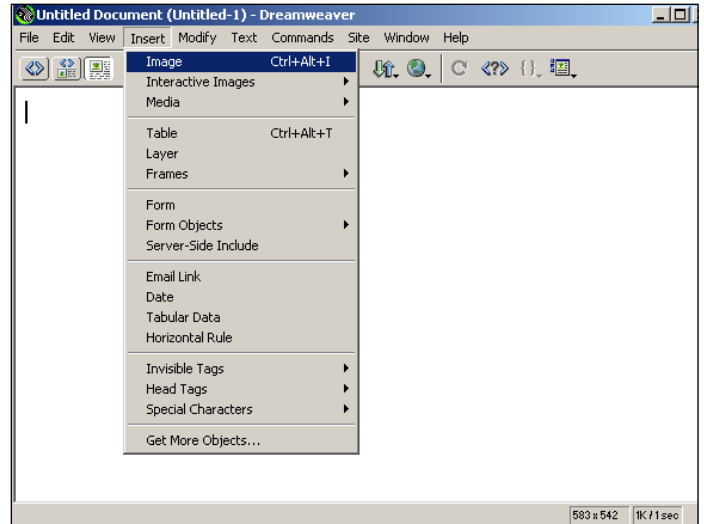
Step 15: Importing an image.

- First lets go find an image to use on page2.htm
- place it into the **C:/testSite/MySite** directory.

Once you have placed an image into that directory:

- Go to Insert>image and click on it or press <CTRL + ALT + i> (fig 7).
- In the “select image source” dialogue box navigate to the picture you just placed in **C:/testSite/MySite** and hit enter.

You should see your image placed onto the page. Remember this image must be either a jpg or a gif image format.



(fig. 7)

Step 17: Now we will create links on homepage.htm that link to the other 2 pages we just created.

- Open or switch to homepage.htm
- Highlight the first row of text on the page that reads “This link connects to a cool page.” (fig 8)
- Enter the page that we will link to in the Properties Panel (indicated in fig 8) “page1.htm”.

Step 18:

- Highlight the second row of text “This text links to a cooler page”
- link it to “page2.htm” by entering “page2.htm” in the Properties window.
- Save homepage.htm

Step 19: Make sure homepage.htm is open and selected. Now, Hit the F12 key on your keyboard. A new shell of Internet Explorer should open up showing you your homepage.htm web page. You links should function properly.

Congratulations!!! You have completed part 1 of your first 3 page website.

Do not publish this site to your expression web space yet.

We have to be careful with these next steps because you may already have some data located on your server space. Remember that you already created a Flash website several months ago.

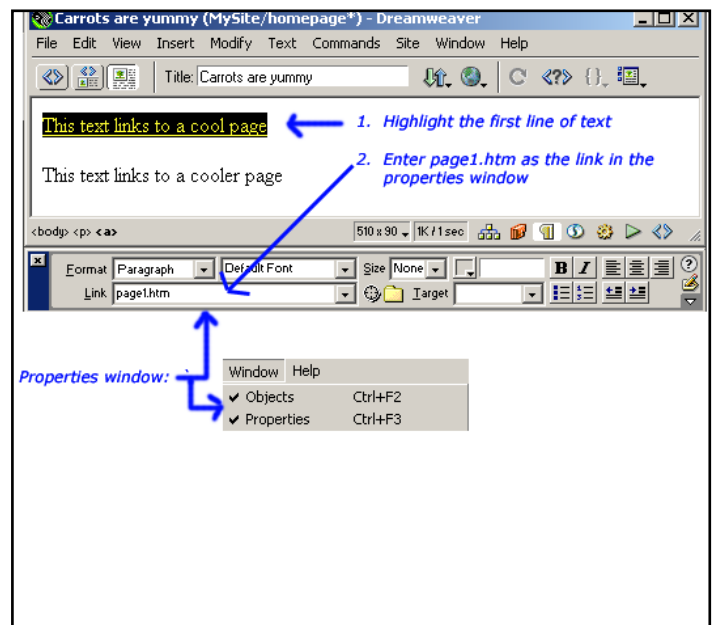


fig 8

Part 2 of 2:

Step 20: Hit F8 to call up the “Site Files” menu. It should look something like the image shown in fig. 9.

Step 21: The right side of this menu will show you files stored locally on your hard drive. Every file in this folder will be uploaded to your website so make sure you only put compressed data in this folder.

You already defined your site in steps 5-8 so when you open this menu it will show you files in your “MySite” directory.

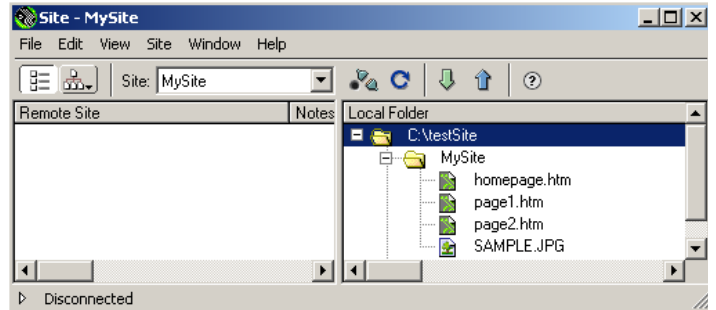


fig 9

Step 22: In this same menu click View>Refresh Remote <ALT + F5>. (fig 10) This will bring up a *request dialogue* box asking you to input your password.

Note: Make sure you do not save your password. If you do, other users of these computers will be able to alter the files on your public website.

After a brief moment you will see a dialogue box telling you that Dreamweaver is attempting to connect to you web server.

If you fail to connect check you user name and password. You entered your user name in step 7. If you still cannot connect check with IS. Some people have a web login that differs from their network login.

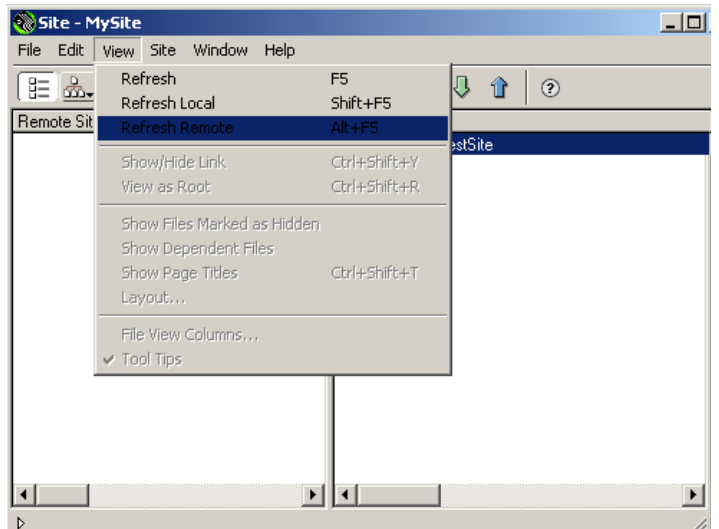


fig 10

Step 23: The left column of the “Site Files” menu <F8> shows you what files are stored remotely on your web account.

Everyone will likely have slightly different data stored remotely.

Figure 11 shows what files are stored on your remote server by default.

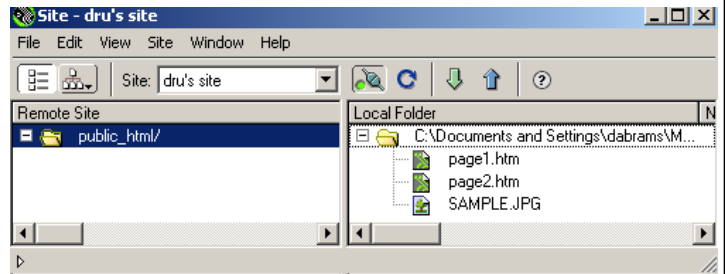


fig 11

In figure 12 we see that there are already some files stored remotely. Check now to see if you have more than the default public_html folder stored on your web space. If not skip to step 25

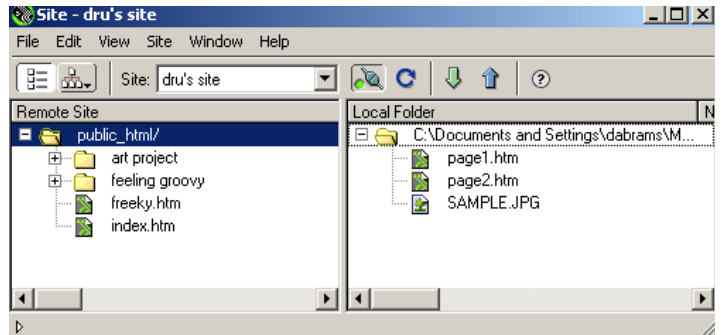


fig 12

Step 24: If it is the case that you already have some data stored remotely on your web space do the following:

- 1. Highlight “Public_HTML” on the remote
- 2. Click the “Get Files” icon (fig 13)
- 3. At the “Are you sure you want to down load the entire site” prompt click “OK”

This will initiate a transfer of all files currently stored on your webspace. These files will be transferred into c:/testSite/Mysite.

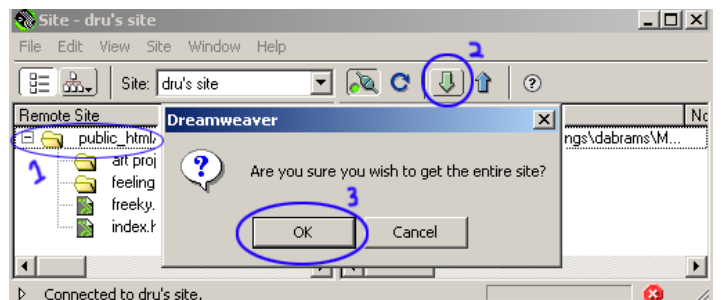


fig 13

Step 25: The last thing we will do for now is try the synchronize function. (Site Files Menu>Site>synchronize)

- Create a New Document <CTRL+N>
- Save it as page3.htm
- Make sure the Site Files Menu is open (F8)

- Refresh your local files readout (View>Refresh local or <Shift+F5>. You'll see page3.htm is now listed.

- synchronize your site: Site>synchronize

- At the prompt select "Entire Site" from the drop down. This will compare every file in your local "Mysite" folder to every file on your remote site. If something stored locally has a newer modification or creation date it will be uploaded.

Step 26: Finally lets test your new site online. Open up a new shell of Internet Explorer and navigate to:
<http://www.expression.edu/~yourWebLogin>

Congratulations! That completes this tutorial. You should have successfully created a 3 page website complete with links. Also you have been introduced to how to define a site and how to keep you site synchronized using dreamweaver's automated synchronization tool.